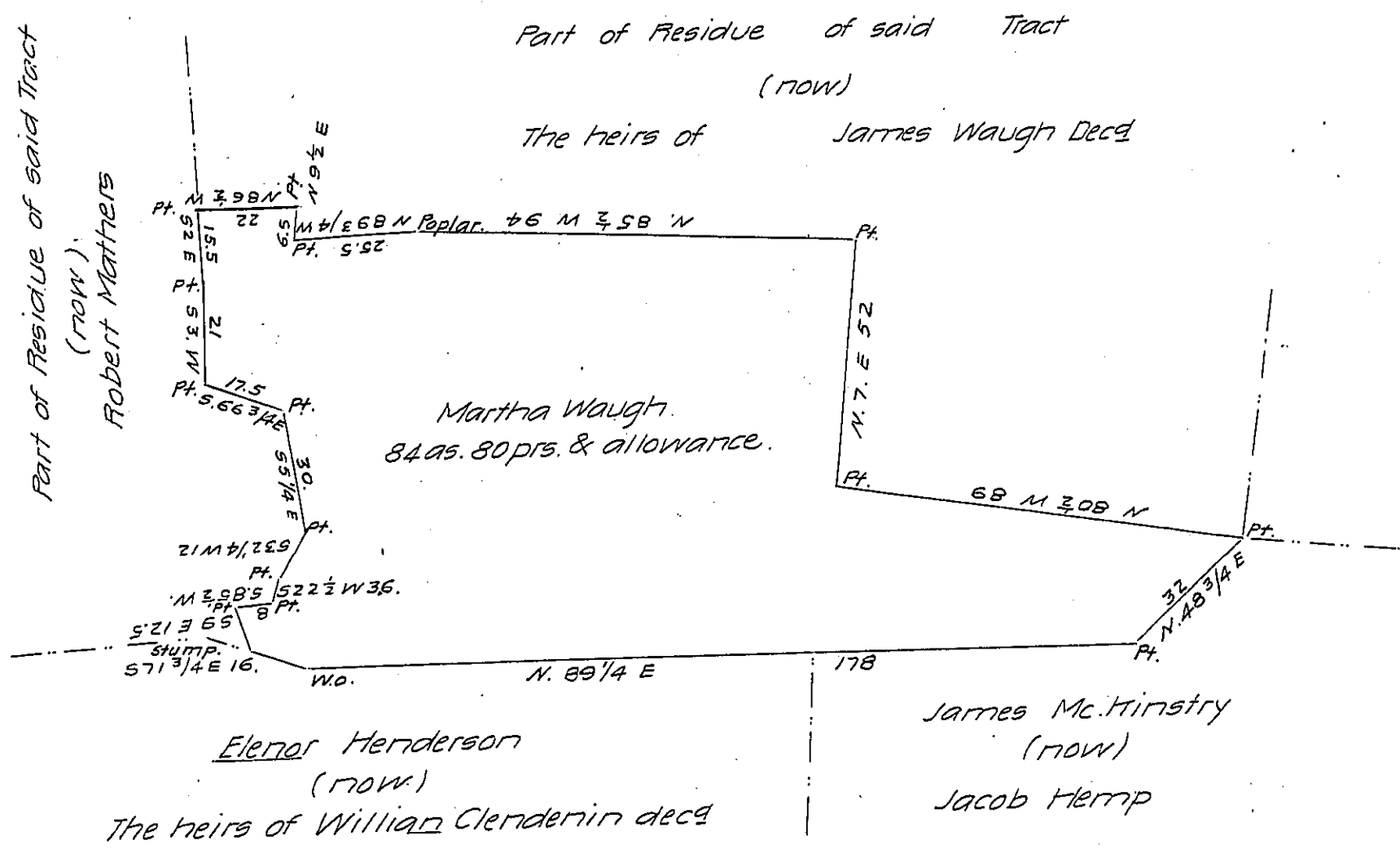


FORM NO. 1.



A Draught of a tract of land situate in (East pennsboro now) Silverspring township, Cumberland County Containing Eighty four acres & eighty perches & allowance of six pr cent &c. It being part of a tract originally surveyed in pursuance of a warrant granted to Martha Waugh bearing date the 16th day of March 1789. Surveyed for John Clendenin Esqr. May the 16th 1836.

Patrick Davidson D.S.

To John Taylor Esqr.
Surveyor General.

IN TESTIMONY that the above is a copy of the original remaining on file in the Department of Internal Affairs of Pennsylvania, made conformably to an Act of Assembly approved the 16th day of February 1833, I have hereunto set my hand and caused the Seal of said Department to be affixed at Harrisburg, this twenty fourth day of June 1907

Henry Howell
Secretary of Internal Affairs.